



Romios Gold

ONTARIO PROJECTS - UPDATE

DETAILED PRESENTATION – OCTOBER 2022

This note is Regarding Forward-Looking Statements: This Presentation contains forward-looking statements that involve risks and uncertainties, which may cause actual results to differ materially from the statements made. When used in this document, the words "may", "would", "could", "will", "intend", "plan", "anticipate", "believe", "estimate", "expect" and similar expressions are intended to identify forward-looking statements. Such statements reflect our current views with respect to future events and are subject to such risks and uncertainties. Many factors could cause our actual results to differ materially from the statements made, including those factors discussed in filings made by us with the Canadian securities regulatory authorities. Should one or more of these risks and uncertainties, such actual results of current exploration programs, the general risks associated with the mining industry, the price of gold and other metals, currency and interest rate fluctuations, increased competition and general economic and market factors, occur or should assumptions underlying the forward looking statements prove incorrect, actual results may vary materially from those described herein as intended, planned, anticipated, or expected. We do not intend and do not assume any obligation to update these forward-looking statements. Shareholders are cautioned not to put undue reliance on such forward-looking statements.

Qualified Person: The technical information in this Presentation has been prepared in accordance with the Canadian regulatory requirements set out in National Instrument 43-101 Standards of Disclosure for Mineral Projects ("NI 43-101"). The information was reviewed and approved by Mr. John Biczok, P.Geo, VP Exploration of Romios Gold Resources Inc. and a Qualified Person as defined by NI 43-101 Standards.

WHY INVEST IN ROMIOS?

3

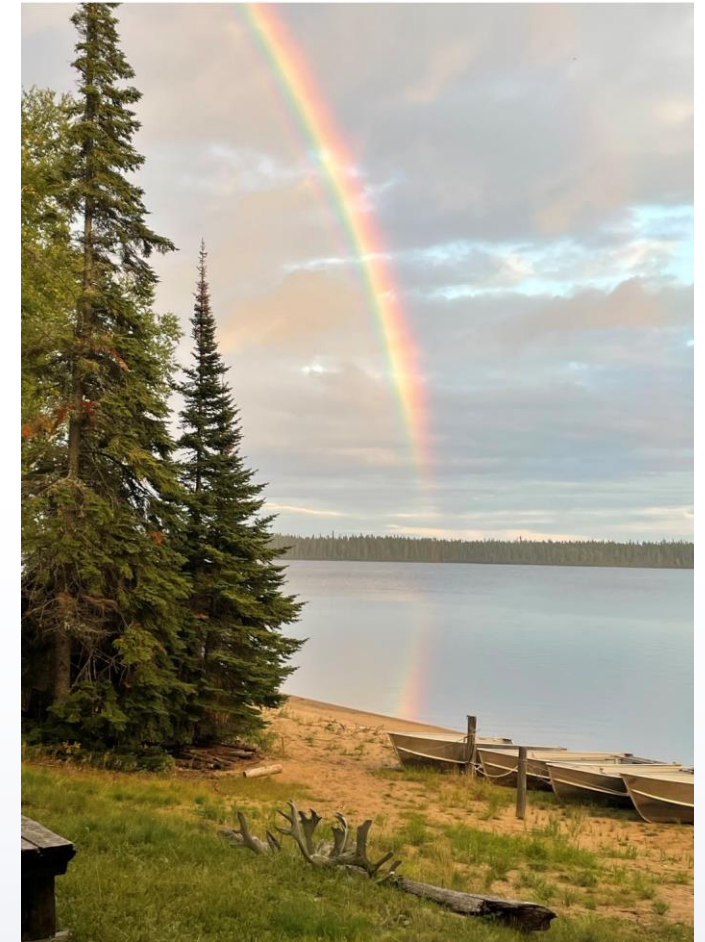
- Large land positions in mining friendly jurisdictions next to major mining operations
- Recent massive sulphide, gold and porphyry Cu-Au discoveries and past producing mines
- \$13 million market cap
- Funding secured for 2022 and drilling and exploration planned
- Rebranded and launch of marketing awareness campaigns

Capital Structure	
Issued (Insiders – approx. 9%):	236 million shares
Fully Diluted:	262 million shares
52 Week Range:	\$0.035 - \$0.06 CAD
Recent Share Price (May 5, 2022)	\$0.05
Market Capitalization:	\$13 Million
Cash and marketable securities:	~\$3.5 million

NORTH CARIBOU LAKE PROJECTS - NW ONTARIO

4

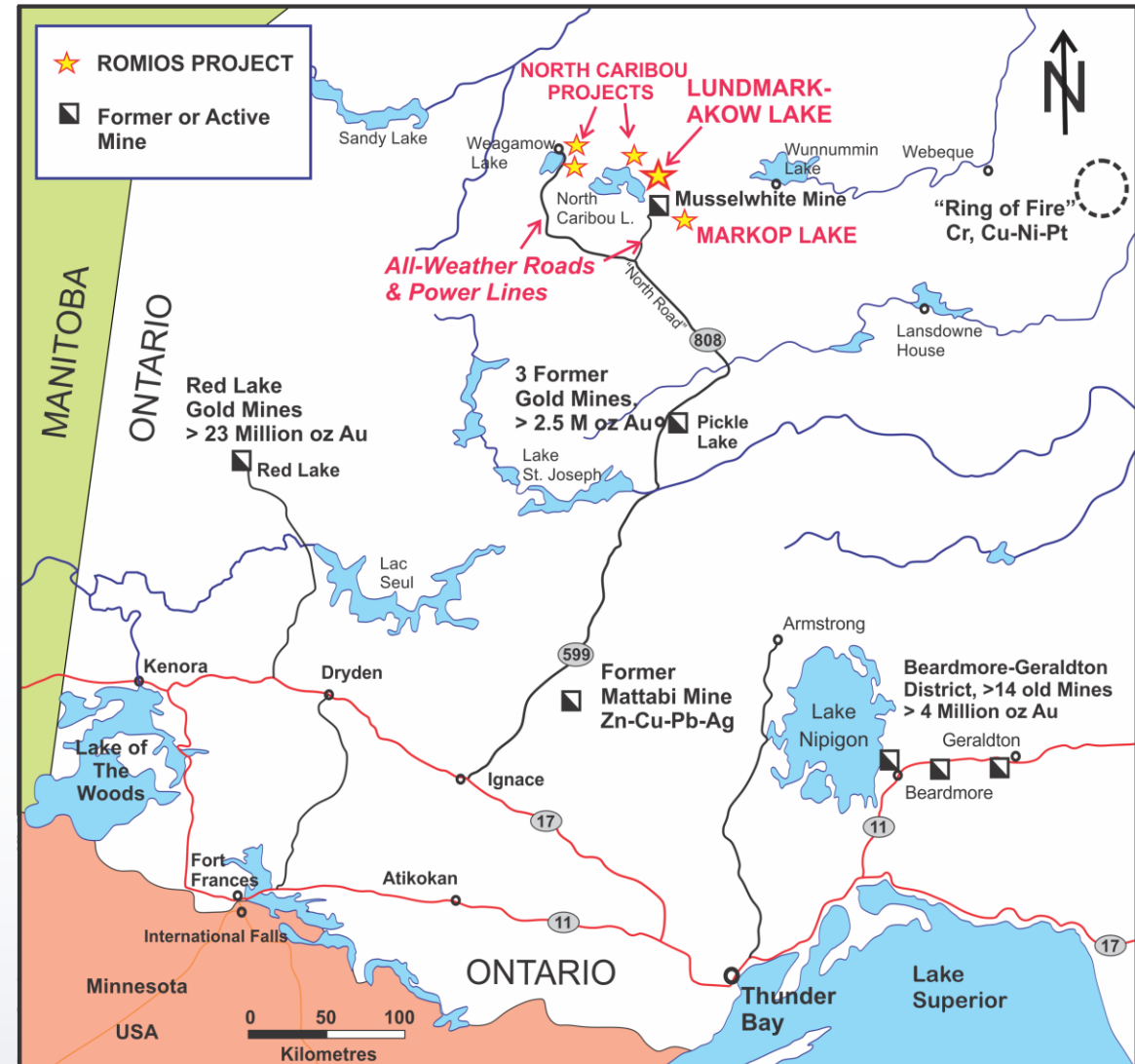
- Pipeline of Multiple Projects in an under-explored greenstone belt that hosts the giant Musselwhite gold mine. Very little work since the 1980's
- Romios made recent gold, VMS and Cu-Au stockwork finds at Lundmark-Akow Lake.
- Encouraging initial results from new claims on the North Caribou River Fault.
- Claims acquired along part of the Arseno Lake BIF hosted gold-silver base metal zone (Bathurst analogy?).
- New Timiskaming-type and -age basin(s) discovered adjacent to Musselwhite mine at Markop Lake. 2 others in this region host 1-2 historic gold mines each.



LOCATION MAP - NORTH CARIBOU & MARKOP LAKE PROJECTS

5

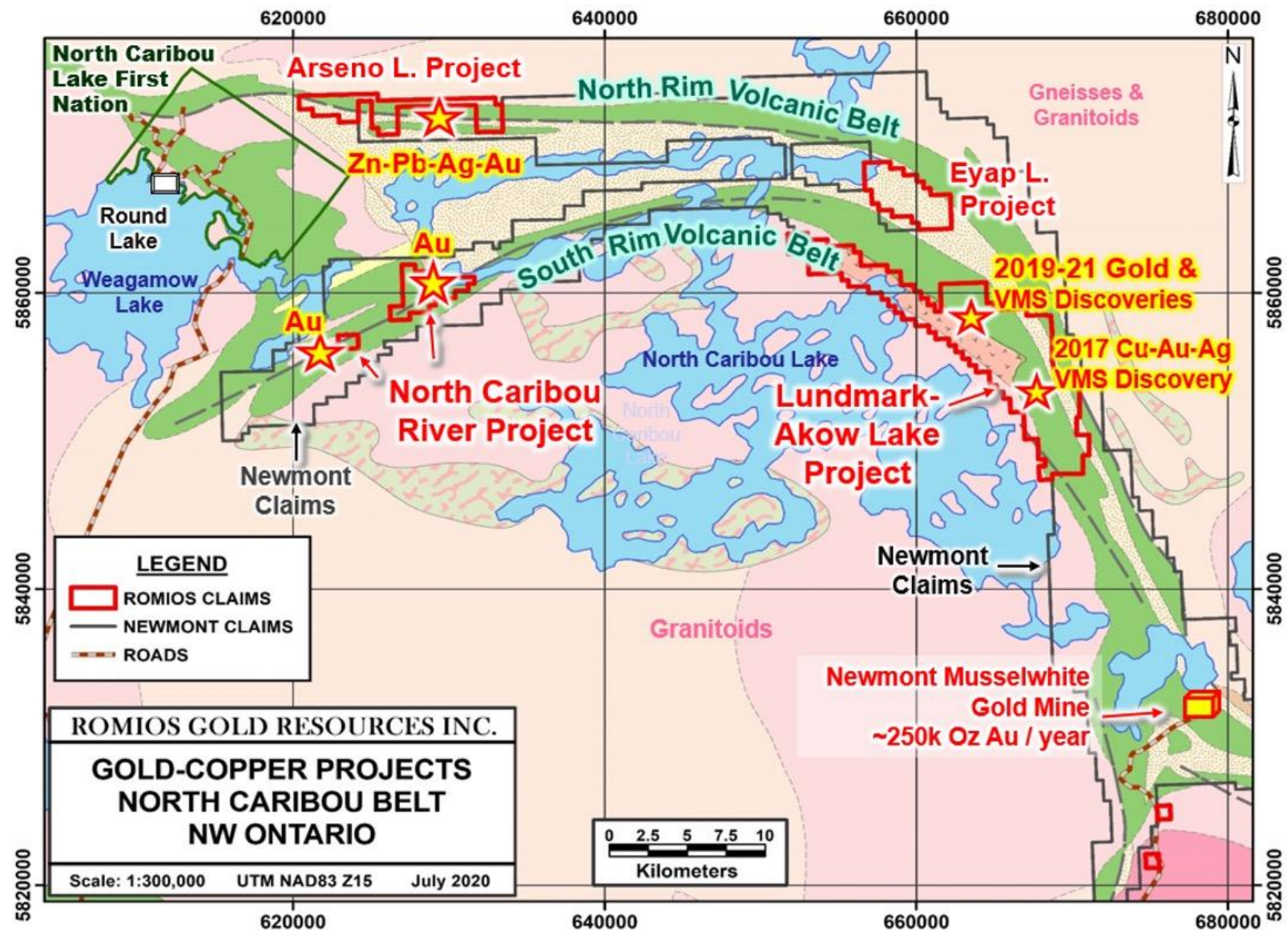
- Major infrastructure improvements recently including completion of high-voltage powerlines and all-weather road to Weagamow Lake.
- Numerous current and former producing mines in this mining-friendly jurisdiction.



NORTH CARIBOU LAKE PROJECTS

6

- ROMIOS holds the majority of the gold prospects in this area outside of Newmont's >7 M Oz Musselwhite gold mine.
- Very little exploration by any other company since the 1980s.
- Very unusual to have an entire greenstone belt with only one mine. Past exploration was sporadic, focused on chasing BIFs and neglecting other targets.



LUNDMARK-AKOW LAKE PROJECT

7

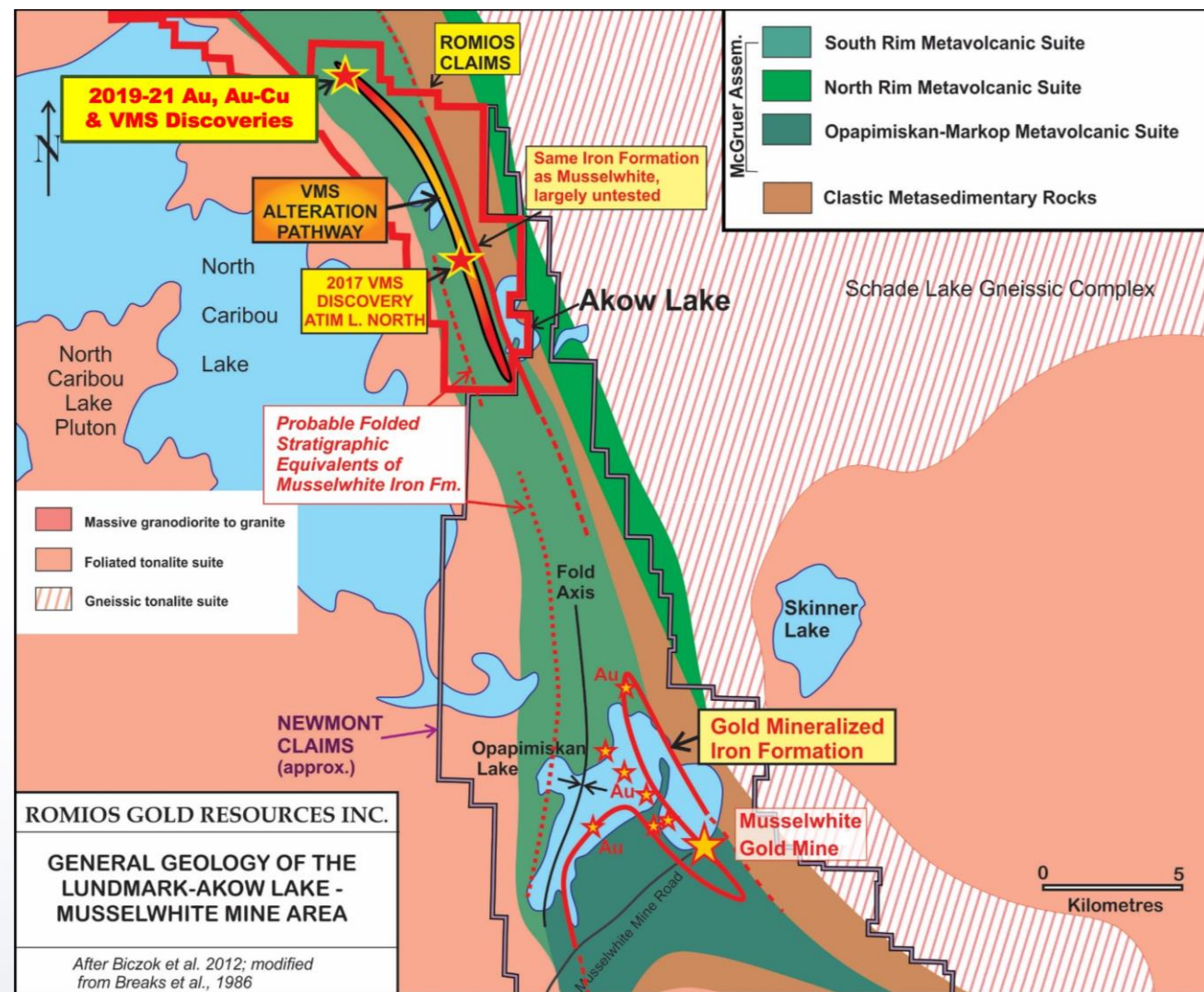
- New Au, Au-Cu & Massive Sulphide Discoveries in NW Ontario in 2017 and 2019.
- Property starts just 15 km from the Musselwhite mine.
- First true VMS discoveries in this part of the belt.
- First discovery of copper-gold stockwork type zones.
- Best gold intercept in the belt outside of Musselwhite (4.75 m @ 8.6 g/t Au).



GENERAL GEOLOGY OF THE LUNDMARK-AKOW LAKE AREA

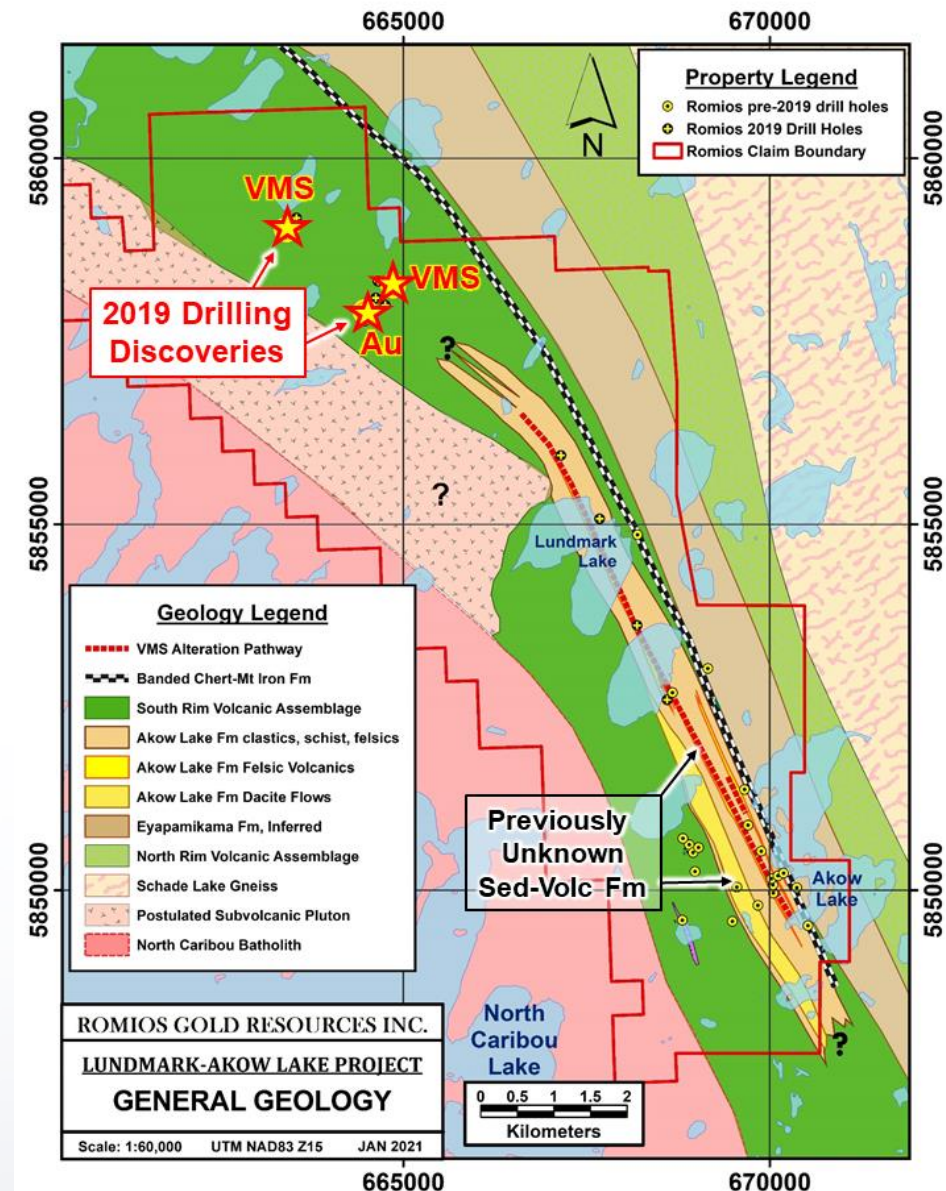
8

- Originally staked to cover the northward extension of the iron formations hosting the >7 M oz Musselwhite gold mine.
- First drilling in 1998 discovered a Cu-Au mineralized schist beside the BIF and work was re-focused onto that horizon for several years. >100 m wide zone but sub-economic grades.
- Resumption of drilling in 2016 and realization that the schist is an alteration zone typical of VMS systems.
- One-hole program in 2017 tested an EM conductor flanking the schist at Atim Lake North, discovered first true VMS.
- More claims acquired on strike to NW in 2018. Drilling here in 2019 discovered 3 VMS horizons, a high-grade gold-quartz vein, Cu-Au stockwork, and unusual epithermal calcite veins with sporadic gold values.



GEOLOGY OF THE LUNDMARK-AKOW LAKE AREA

- Romios' work has uncovered a previously unknown sedimentary-volcanic basin that hosts several felsic tuff horizons and 7 km of VMS style alteration.
- Most significant discoveries were made by following this basin along strike to the North West.
- Abundance of large QFP and FP dykes/sills (up to 50 m wide) in the NW, adjacent to a tabular zone to the SW of "quiet magnetics" noticeably lacking EM conductors. Possible sub-volcanic intrusion.

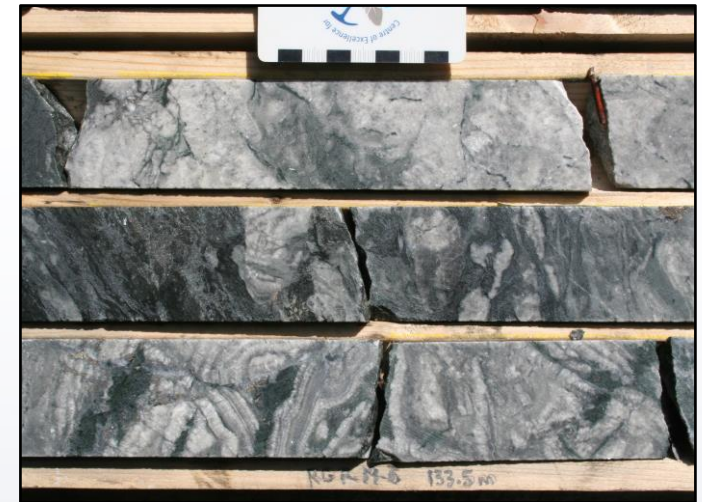


HIGHLIGHTS FROM 2019 -21 PROGRAM

- **GOLD:** The most significant discovery in this belt outside the Musselwhite gold mine property: **8.64 g/t Au over 4.75 m in a quartz vein** in 2019. Requires a winter follow-up program due to location under shallow water.
- Unique “epithermal-looking” Calcite veins with Gold, up to 7.5 m wide.
- **VMS:** Three Cu-Ag-Au+/-Pb-Zn zones discovered in 2019, up to 1.26% Cu and 2.4 g/t Au over 3.25 m; only 1-2 holes each so far, all zones open along strike and at depth. Many conductors in the area remain untested.
- **Cu-Au Stockwork:** Broad zones of veinlet mineralization, e.g. 16.9 m @ 2.6 g/t Au and 0.39% Cu, over >125 m strike length. Open along strike.
- Abundant quartz-feldspar porphyry intrusions suggest nearby volcanic centre associated with >7 km long well developed alteration pathway.
- 30 km from Musselwhite mine, road and power lines.



2019 intercept of mineralized quartz-pyrrhotite vein. 8.64 g/t Au/4.75 m.

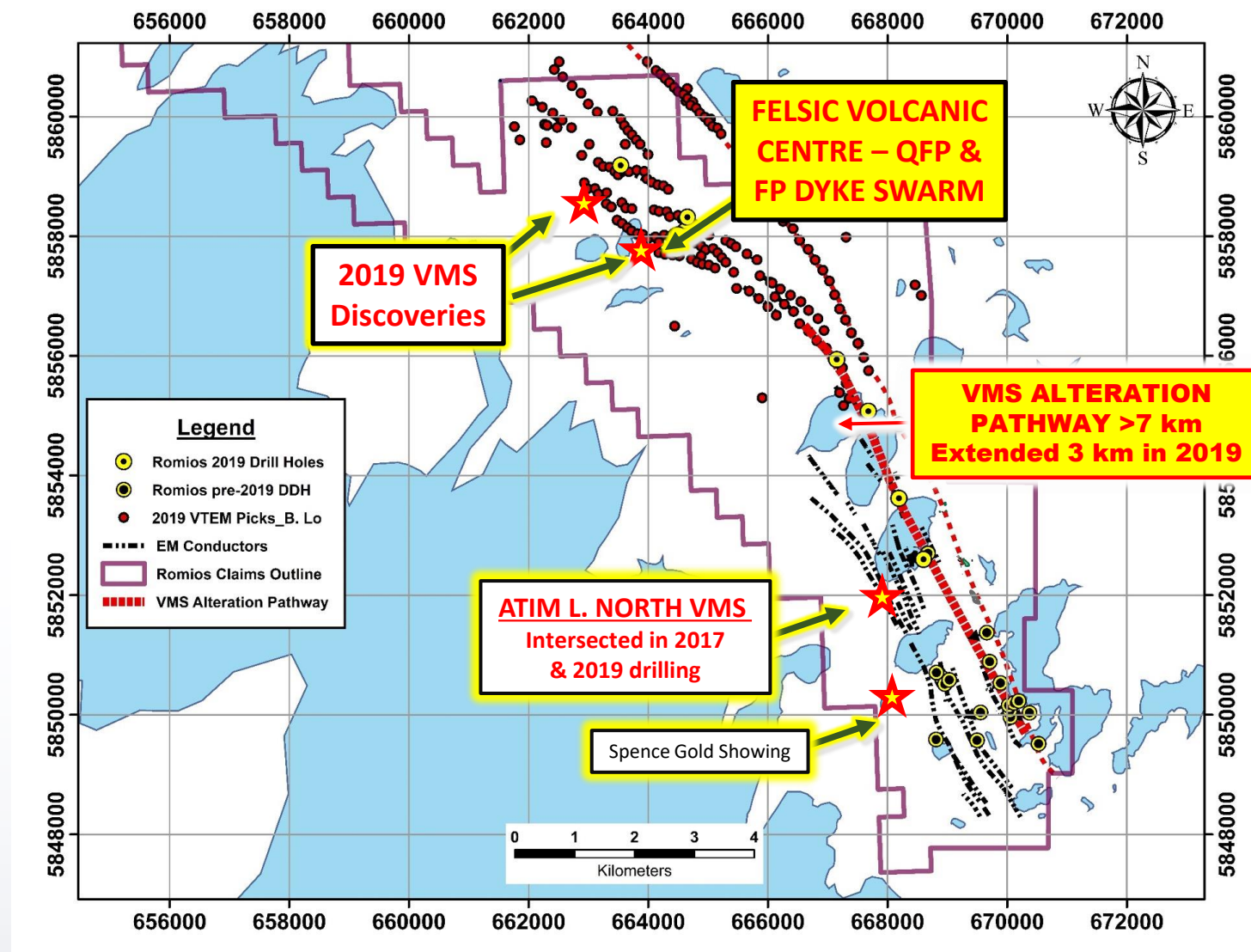


2019 intercept of “epithermal-looking” calcite veins up to 7.5m wide, with local gold mineralization.

VOLCANOGENIC MASSIVE SULPHIDE TARGETS

11

- VMS style alteration pathway (garnet-staurolite-sericite-biotite schists) followed by geophysics and drilling 7 km north from Akow Lake.
- First true VMS discovered at Atim Lake North in 2017. Relatively thin but good Cu-Au-Ag-(Co) grades. Associated with massive tourmalinite.
- 2019 drilling targeted cluster of EM conductors along strike to the NW of Atim Lake North.
- Drilling has outlined a previously unknown sedimentary basin with multiple felsic volcanic horizons for the length of the pathway.
- Drilling on the NW claims intersected multiple blue quartz-eye & feldspar porphyries for the first time. Probable felsic volcanic centre producing the VMS and stockwork vein mineralization.



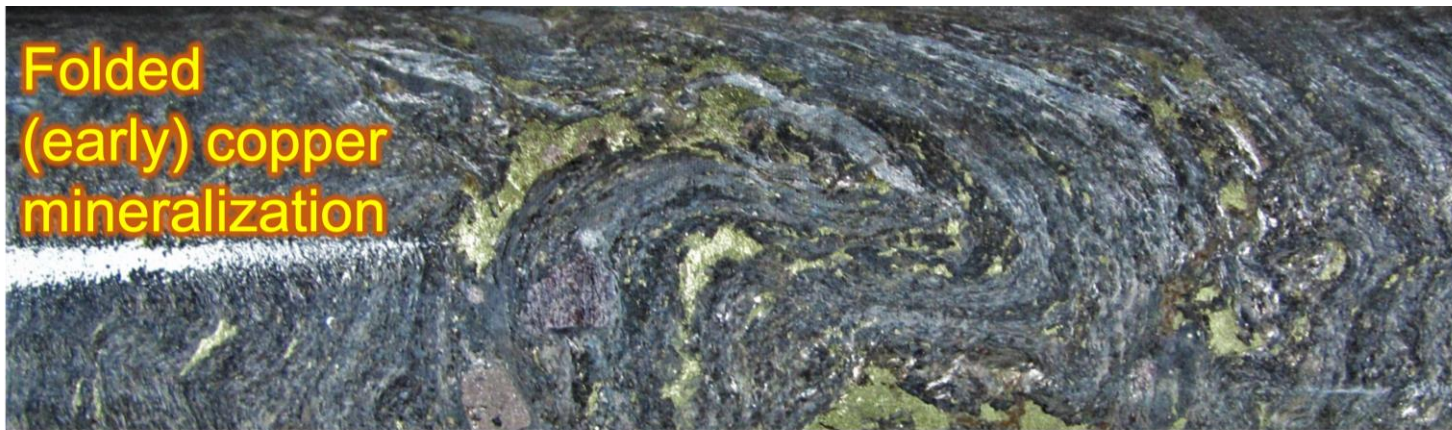
12

- [illegible]

VMS STYLE ALTERATION ZONE

13

- Sulphides (chalcopyrite) are locally folded, indicating they pre-date deformation.
- Garnets are often very coarse-grained and euhedral, indicating they are hydrothermal in origin.
- Commonly have zones of massive biotite up to 30-40 cm wide, some with staurolite and/or garnet; some flanked by chalcopyrite veinlets.



VMS STYLE ALTERATION ZONE

14

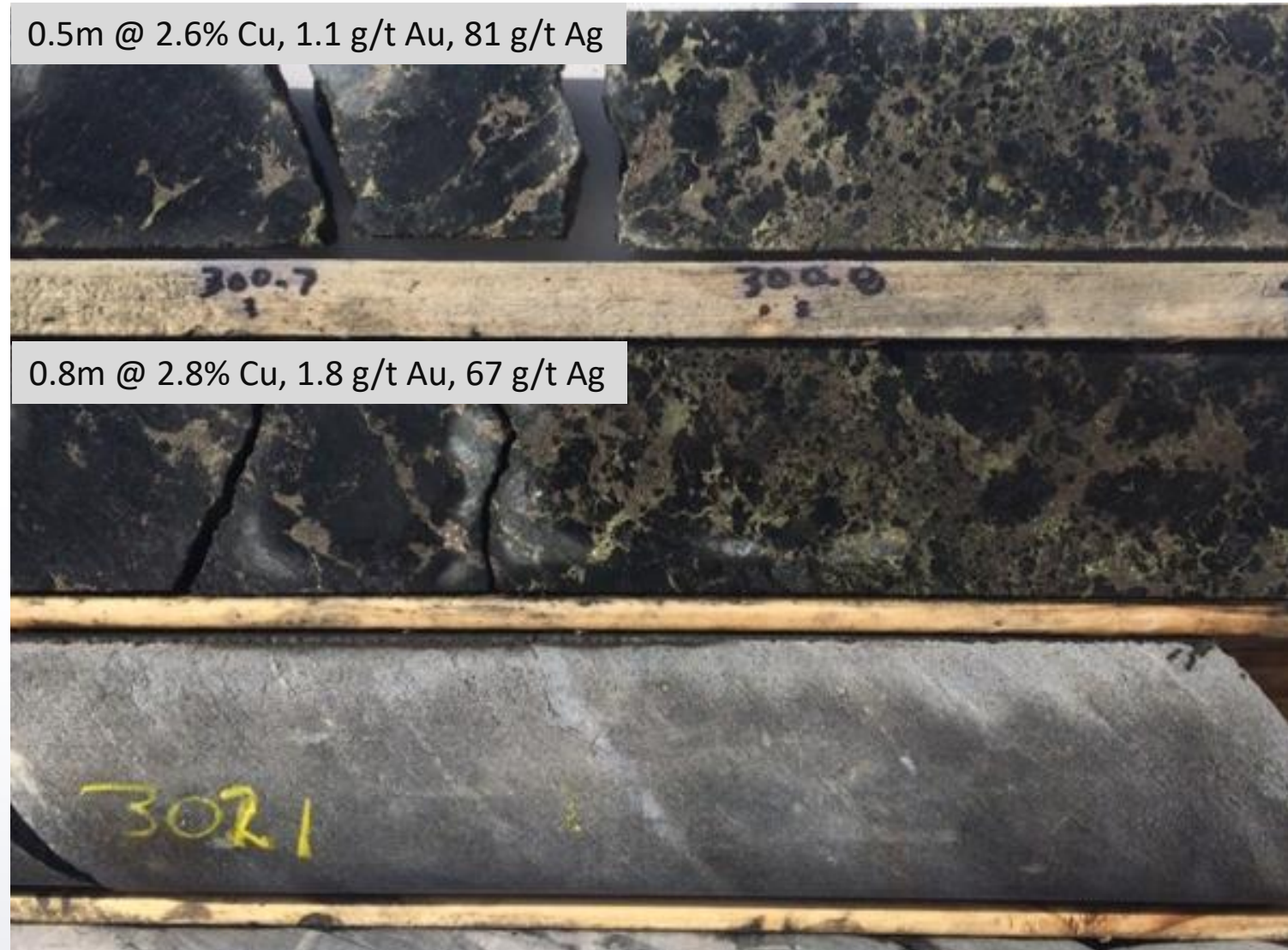
- Staurolite (yellow-brown grains in the photo) is a common and often dominant mineral in the alteration pathway. Indicative of strong, pervasive hydrothermal alteration depleting sodium and other elements prior to metamorphism.
- Some schists have $<0.1\%$ Na_2O , evidence of this intense hydrothermal alteration.



2017 ATIM LAKE NORTH, FIRST VMS DISCOVERY

15

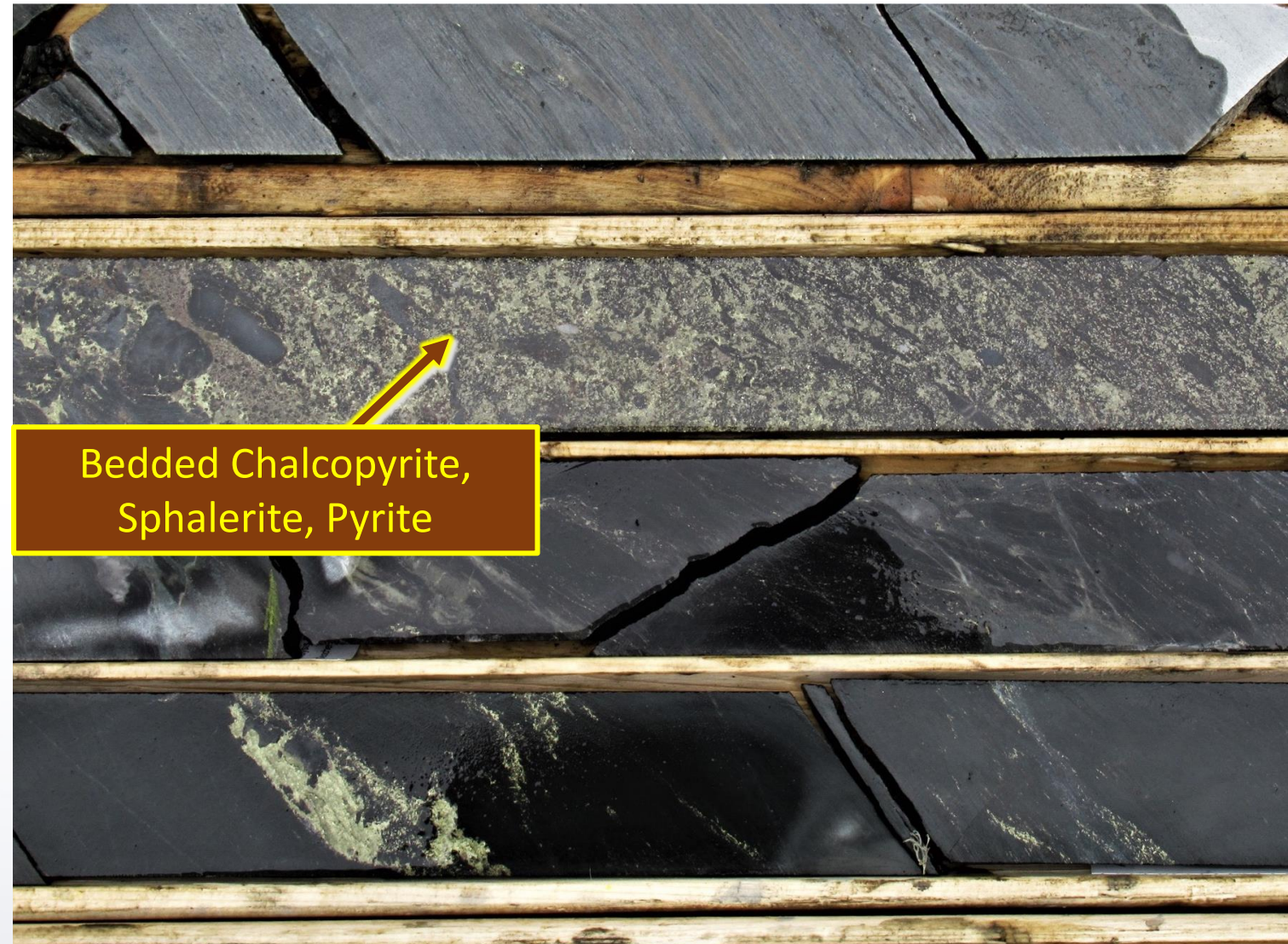
- Key Results: 1.9 m @ 2.35% Cu, 1.4 g/t Au, 68 g/t Ag
- Black fine-grained material between the sulphide grains is mainly tourmalinite.
- Indicative of fluid flow through a thick sedimentary pile before exhalation at shallow levels.



3 SEPARATE VMS ZONES DISCOVERED IN 2019

16

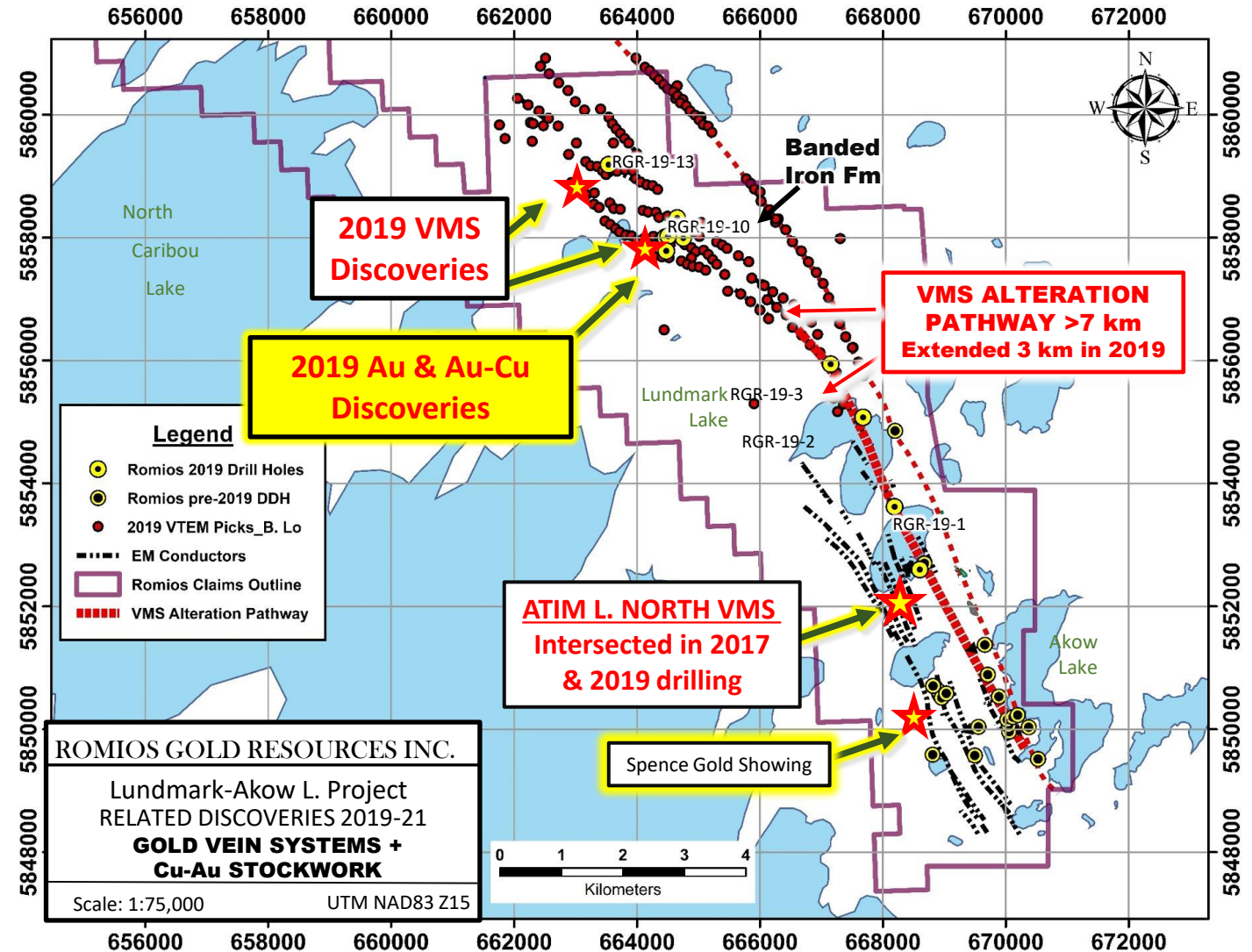
- DDH RGR-19-10: 2019 NW VMS DISCOVERY
- 3.5 m @ 1.26% Cu, 2.4 g/t Au, 23 g/t Ag
- Incl. 1.7 m @ 2.24% Cu, 4.3 g/t Au, 0.6% Zn, 44 g/t Ag
- No significant alteration zone beneath the sulphides, combined with abundance of sphalerite, pyrite and local galena, indicates that these horizons are the distal part of the system. High-grade Cu-Au rich core still to be found.



GOLD VEIN SYSTEMS + CU-AU STOCKWORK

17

- Drilling in 2019 of the northwest EM/VMS targets resulted in the discovery of additional styles of mineralization:
 1. Gold-rich quartz vein(s)
 2. Cu-Au Veinlet Stockworks
 3. Epithermal-looking calcite veins with sporadic gold values to 3 g/t Au.

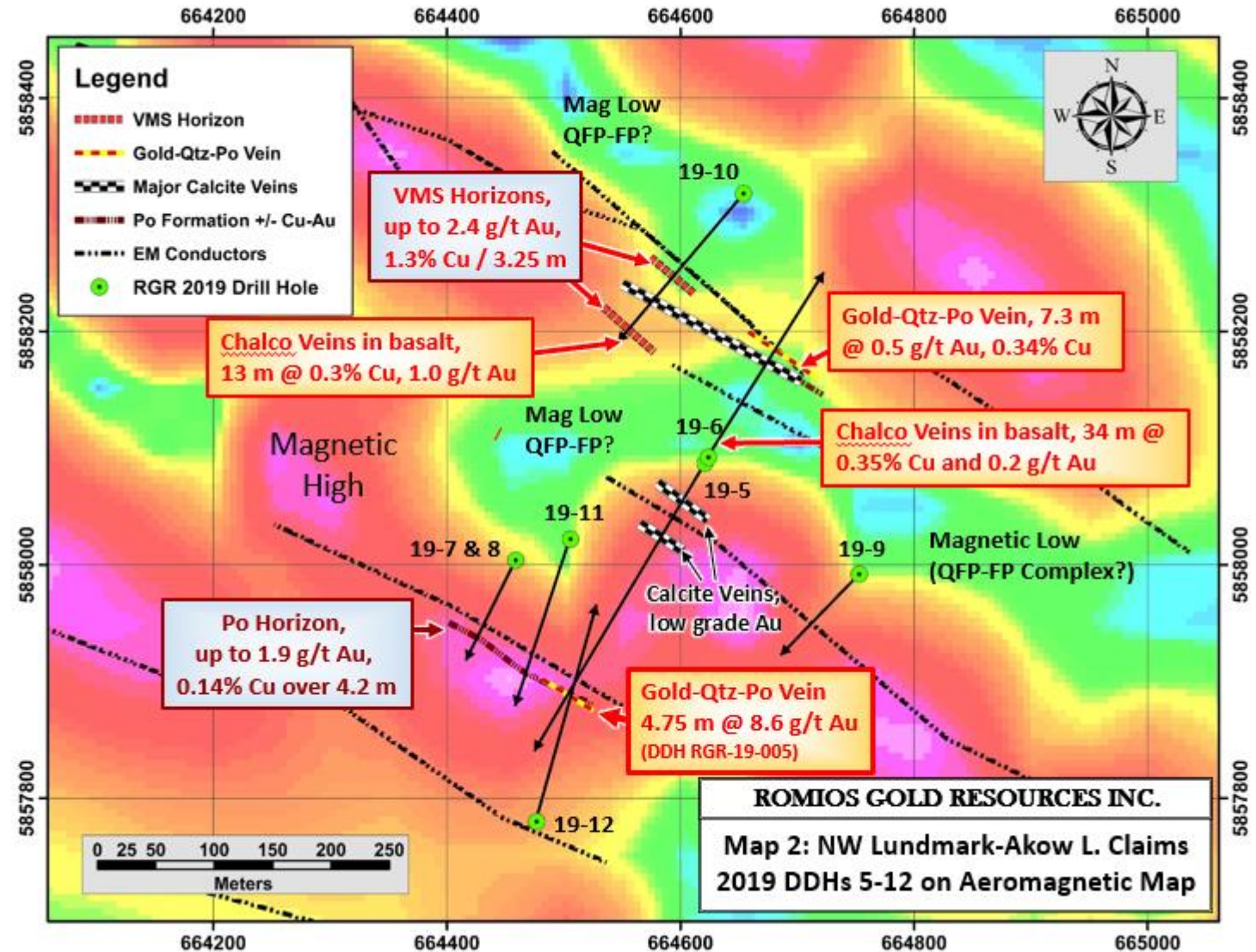


GOLD VEIN SYSTEMS + CU-AU STOCKWORK DRILLING

18

2019 Drill program discovered several VMS horizons and 3 surprising types of additional mineralization:

1. Epithermal looking, locally gold-bearing calcite veins up to 7.5 m wide.
2. Broad zones of Cu-Au stockwork mineralization.
3. A significant Au-Qtz-Po vein assaying 8.64 g/t Au/4.75 m.



2019 GOLD DISCOVERY ON THE NW CLAIMS

19

- DDH RGR-19-005: **4.75 m @ 8.64 g/t Au** (288.85 to 293.6 m).
- At least 2 generations of quartz veining. Pyrrhotite with first phase. Visible gold with both phases.
- Best gold intercept known in this belt outside of the Musselwhite property.
- Located under shallow pond, has proven difficult to drill off from land in the summer.



OPEN SPACE FILLING TEXTURES IN GOLD-BEARING CALCITE VEIN, DDH RGR-19-5

20

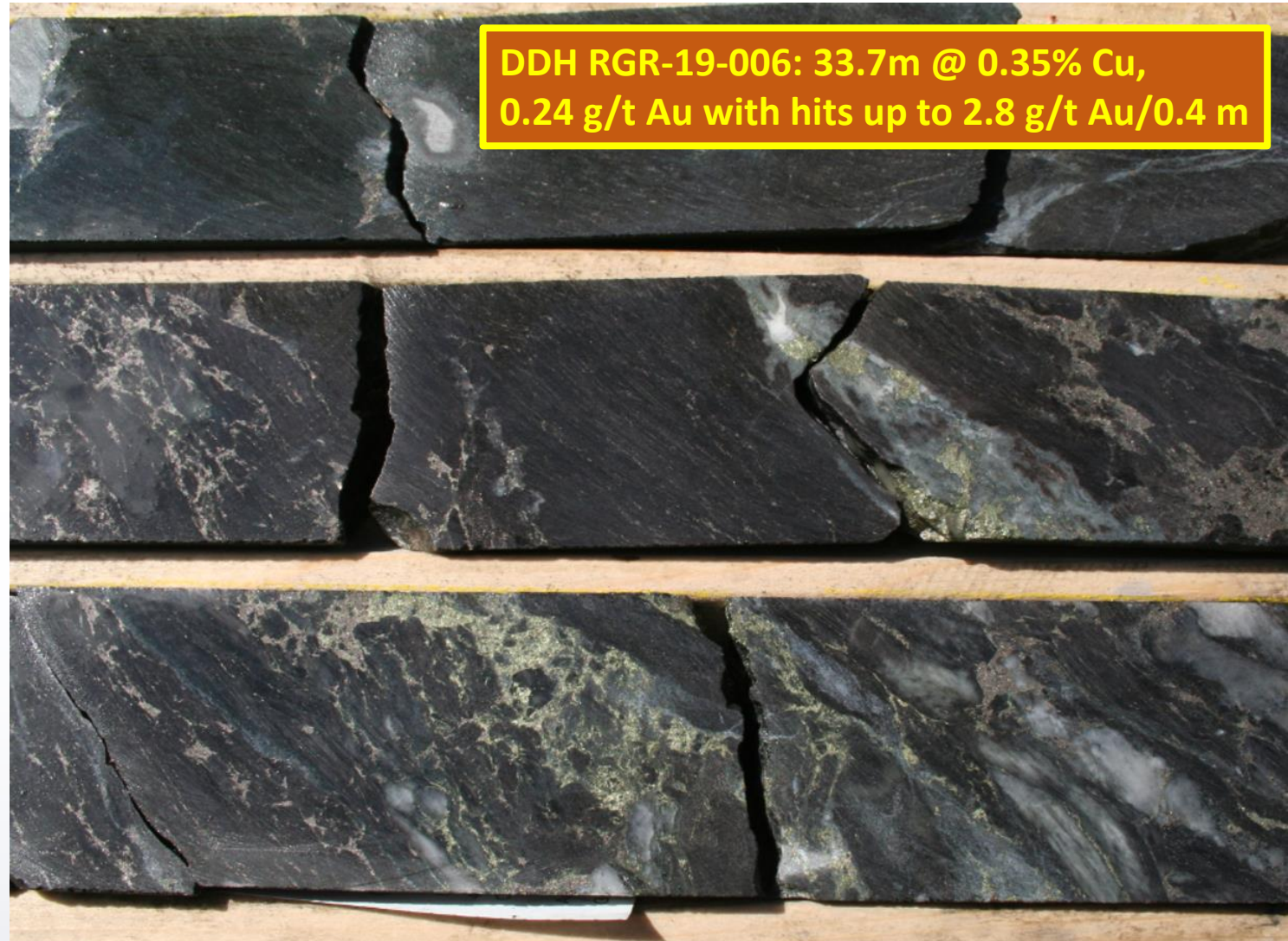
- Similar textures are found in the Red Lake gold mine. In that setting, these are indicative of high-pressure, deep-seated fluid.
- Up to 2.96 g/t Au/1m
- Multiple large veins up to 7.5 m wide.
- Evidence for a potentially wide-spread, deep seated mineralizing fluid.



CU-AU STOCKWORK

21

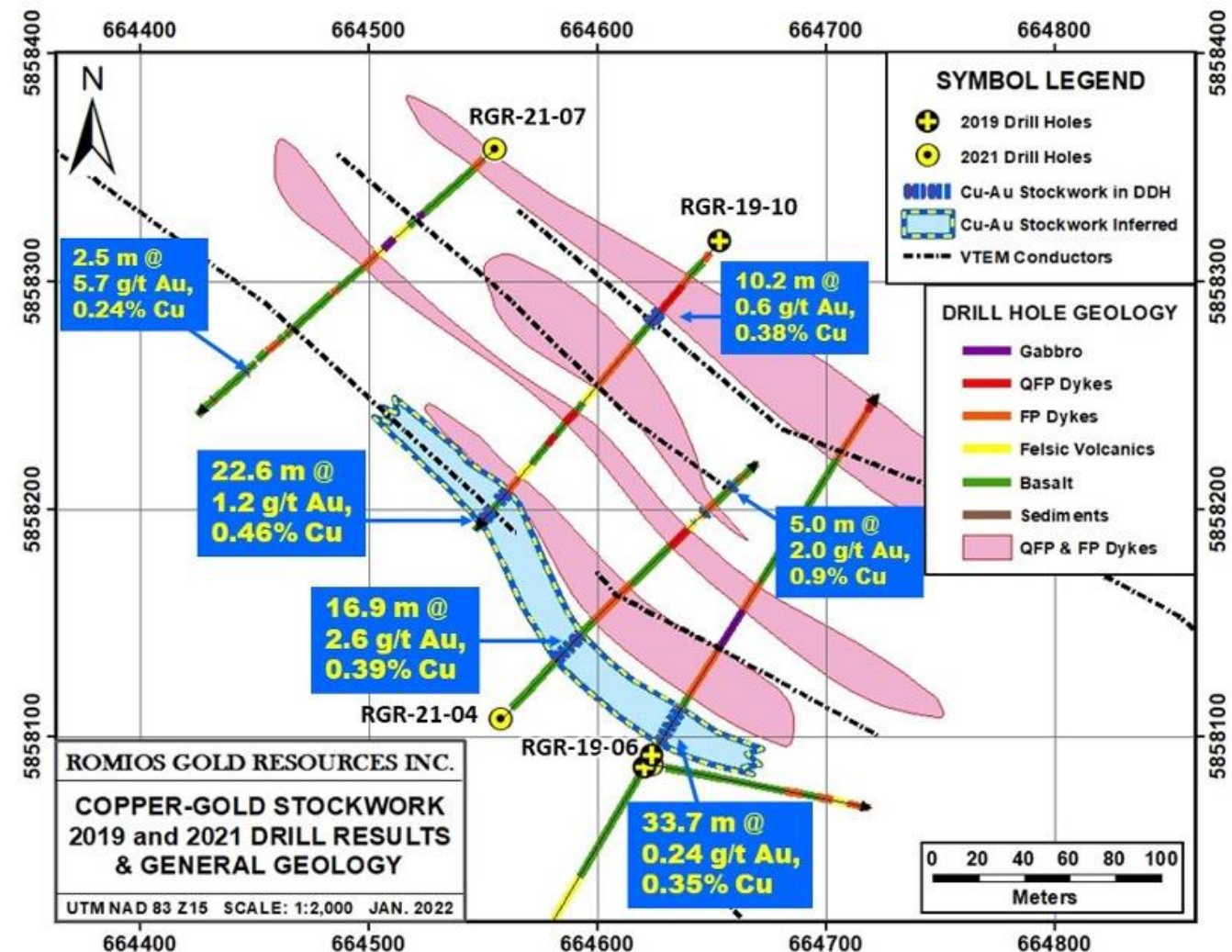
- Broad zones of Chalcopyrite Veins + Gold in basalts flanking large QFP intrusions.
- Over 125 m strike length so far.
- Believed to subcrop under shallow overburden (~5-6 m).
- Better Au in 2021 holes.



COPPER-GOLD STOCKWORK AND RESULTS – 2019 AND 2021

22

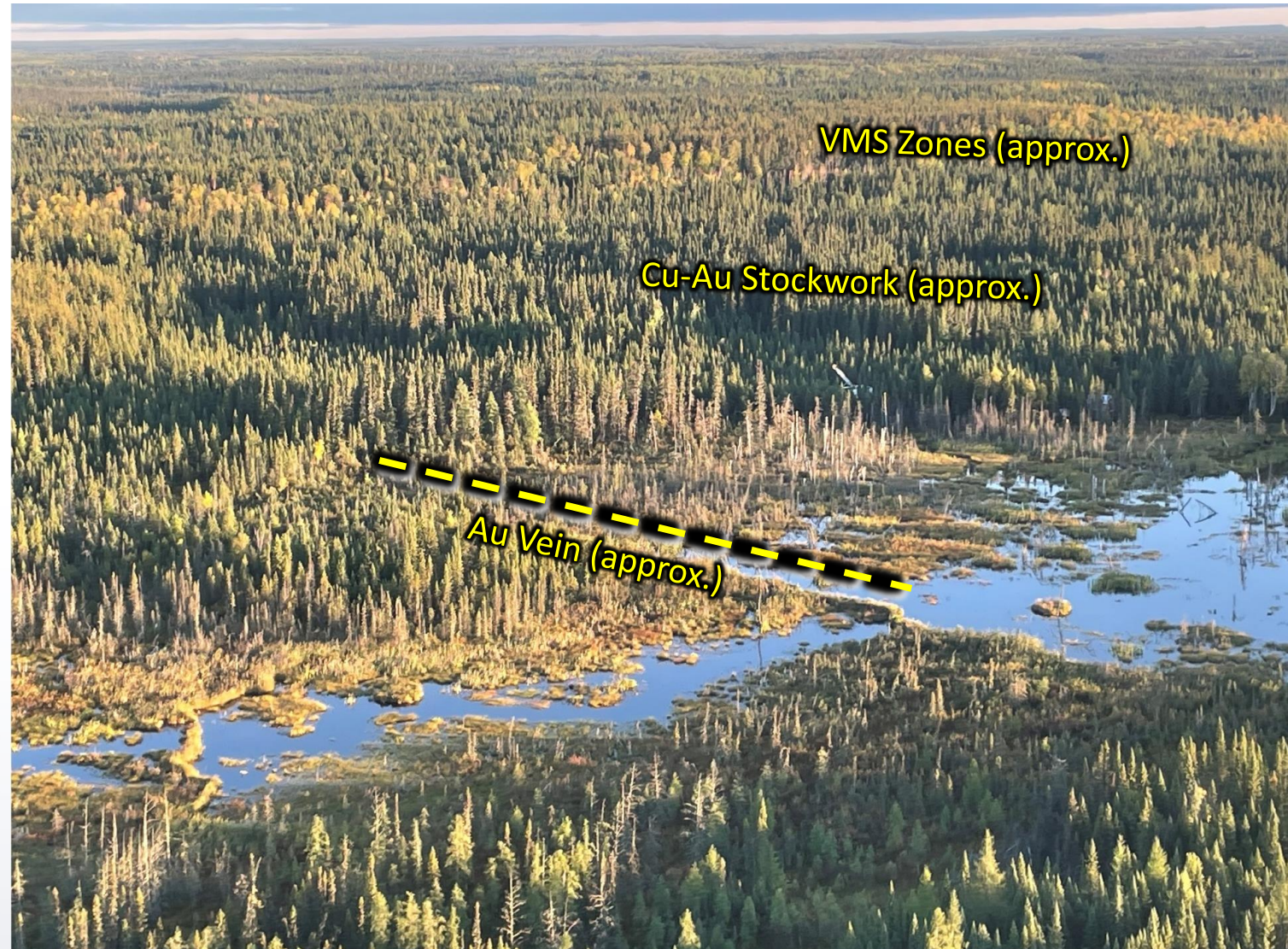
- Main zone on south side of a QFP dyke/sill.
- >125 m long, open down dip and along strike to SE
- Not targeted systematically yet, all intercepts while drilling VMS targets.
- Need to refine geophysical data interp or conduct new geophysical survey designed to delineate these stockworks.
- Makes a potentially attractive open-pit target.



APPROXIMATE ORIENTATION OF MINERALIZATION

23

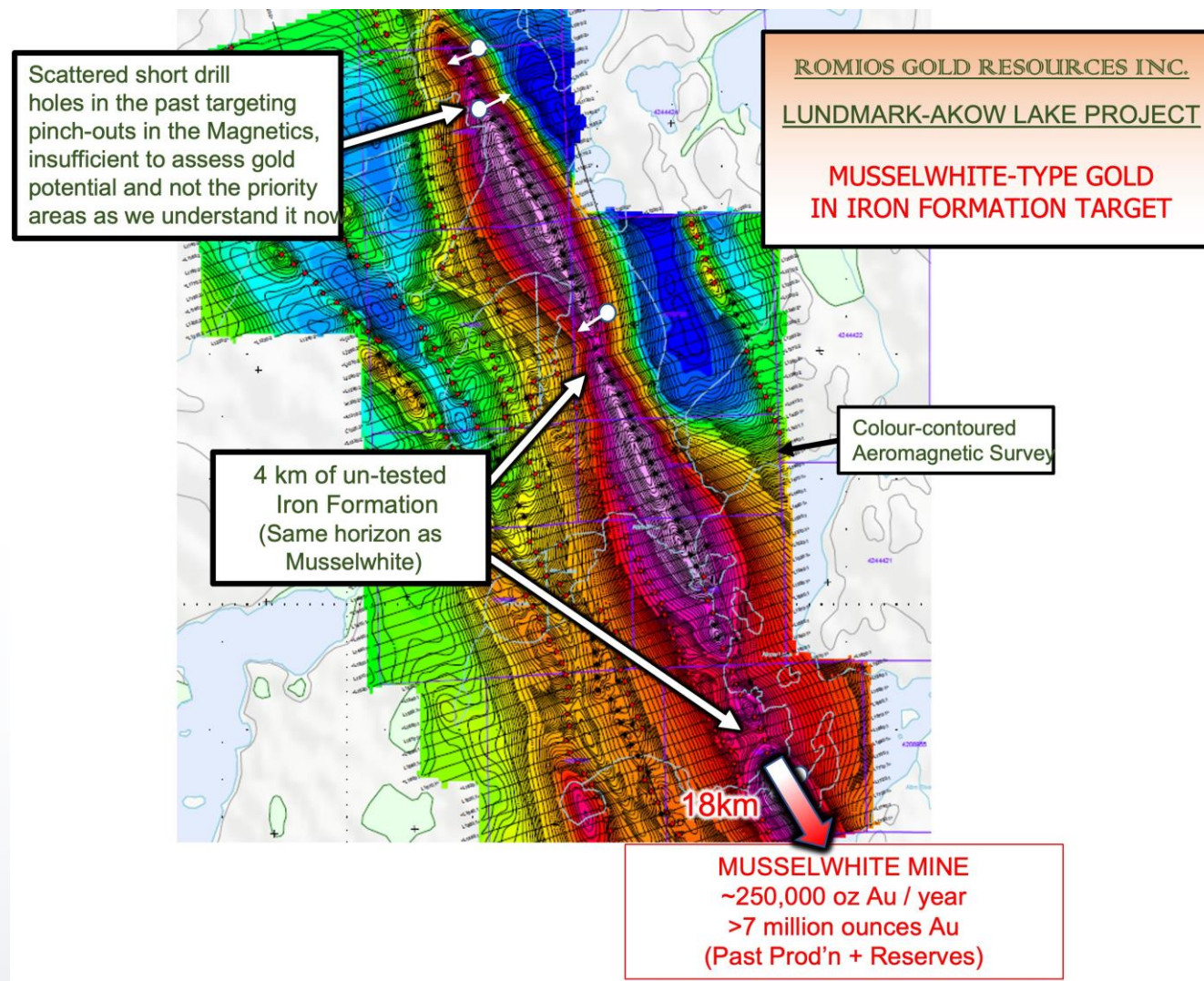
- All VMS, Au and Au-Cu Zones are Open Along Strike and at Depth



MUSSELWHITE-TYPE GOLD IN IRON FORMATION TARGET

24

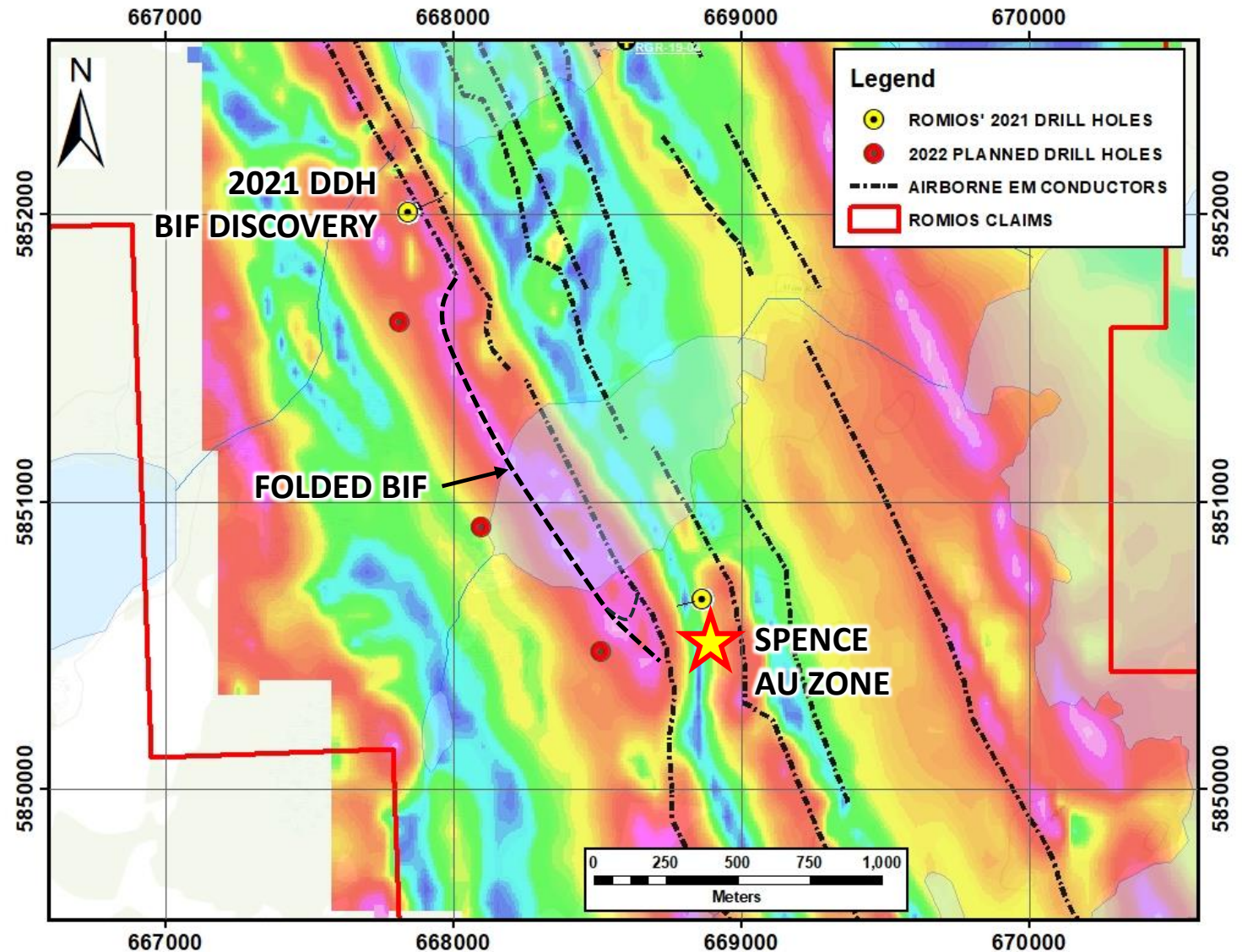
- Romios claims cover 8 km of same iron formation hosting the giant Musselwhite gold mine.
- No outcrops & no drilling in a 4 km interval. Only scattered holes elsewhere.
- Even a low-grade deposit can be economic in this region.
- Past drilling did not target the most favourable areas as we know it now based on the Musselwhite experience.
- Most holes ended in what is now believed to be silicate facies iron formation, the main ore hosts at Musselwhite. Core was not preserved or sampled.



MUSSELWHITE TYPE GOLD-IN-BIF TARGET FROM 2021 DRILLING

25

- 2021 Drill program intersected 2 parallel BIF horizons up to 14 m wide, with a high-silicate component.
- Re-interpretation of the old aeromagnetics revealed a major fold in the BIF 300 m to the south of this 2021 drill hole.
- Fold is ~ 1km long and now a high-priority target for Musselwhite type gold mineralization.



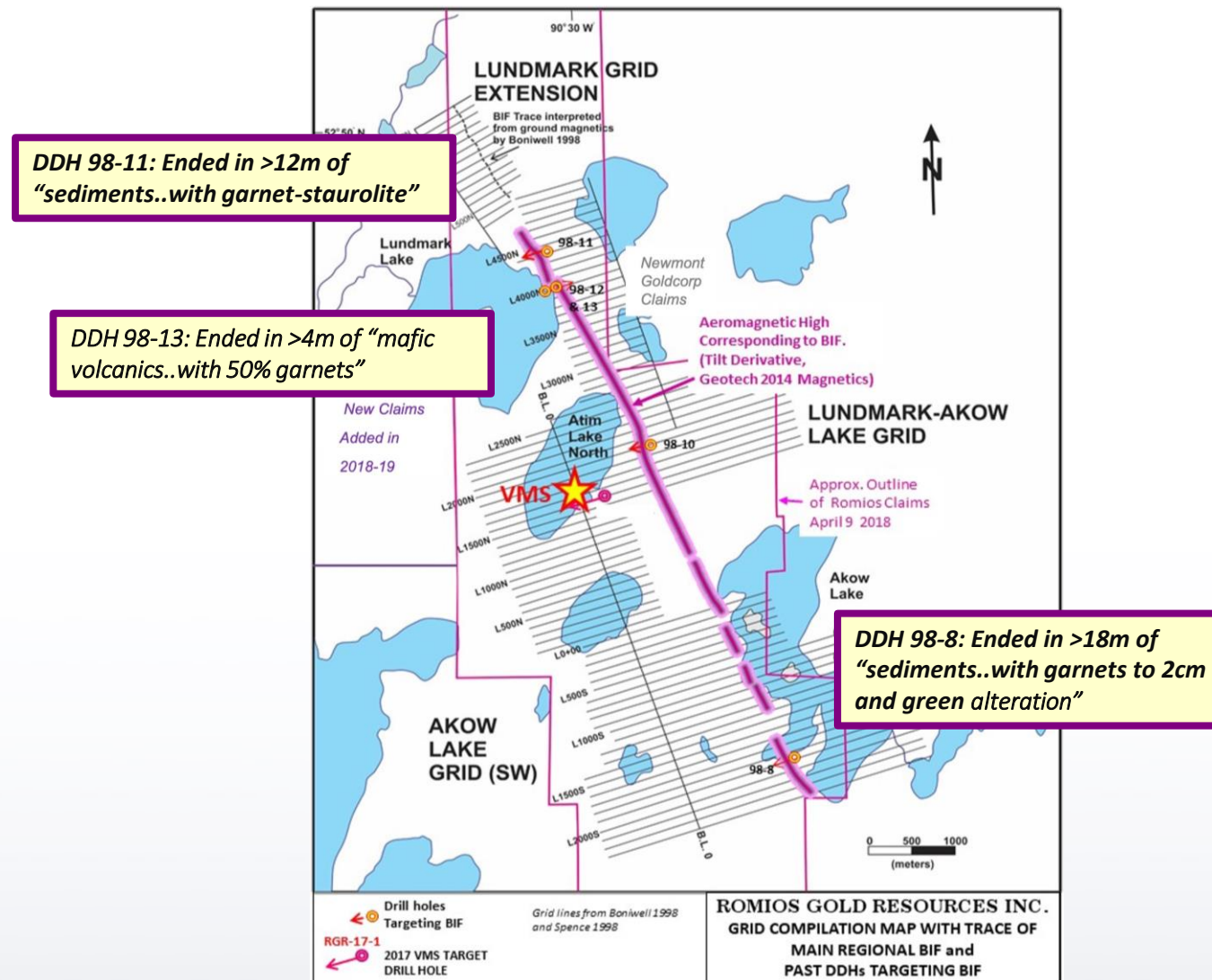
GOLD-IN-BANDED IRON FORMATION POTENTIAL

26

- Several of the past, short holes drilled in mag lows ended in rocks whose descriptions resemble the silicate facies BIF that are commonly mineralized at Musselwhite.

Proposed Work:

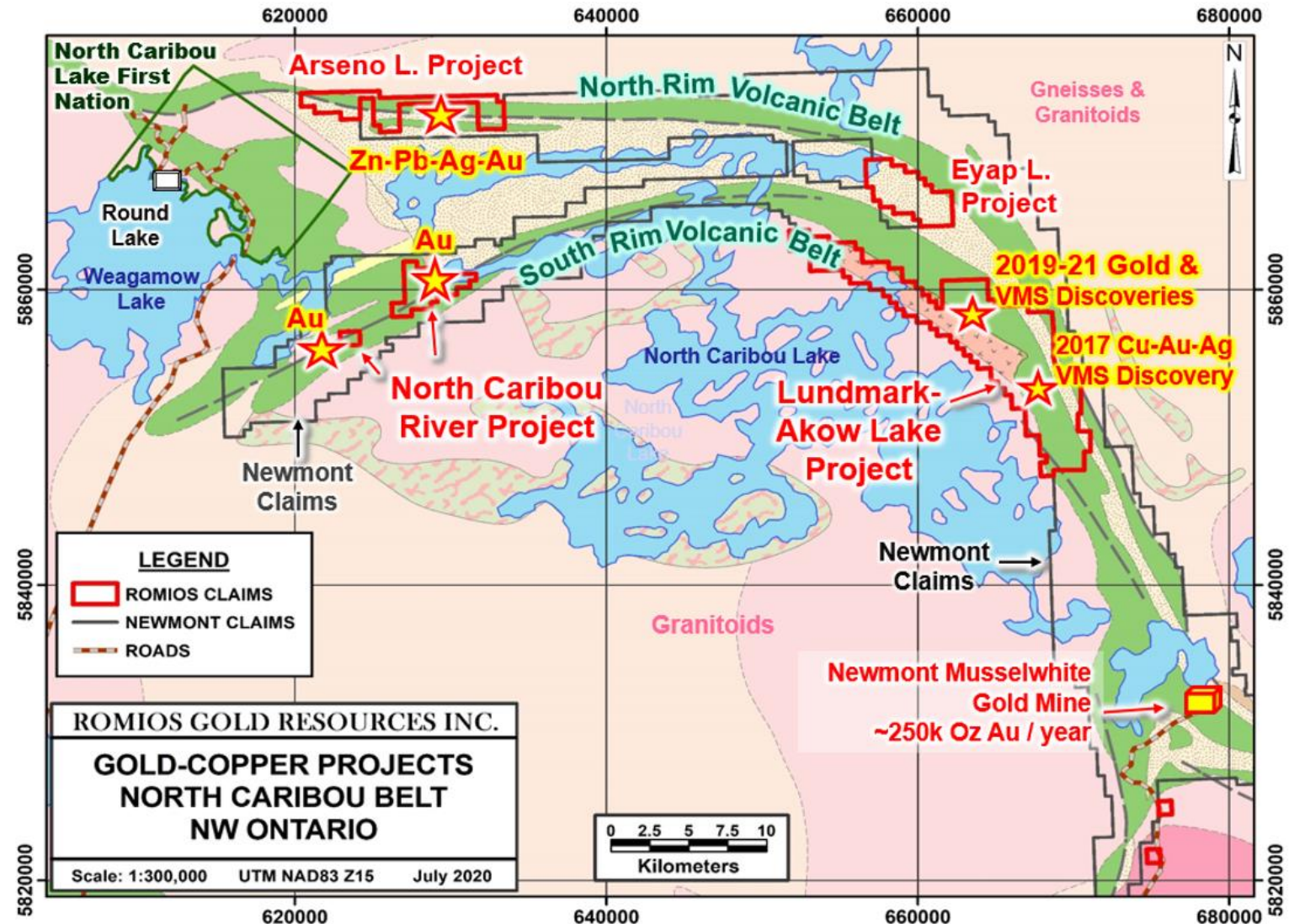
- Complete humus sampling along BIF.
- Detailed structural and BIF facies mapping.
- Drill test any significant gold-in-humus anomalies.



GOLD-COPPER PROJECTS NORTH CARIBOU BELT

27

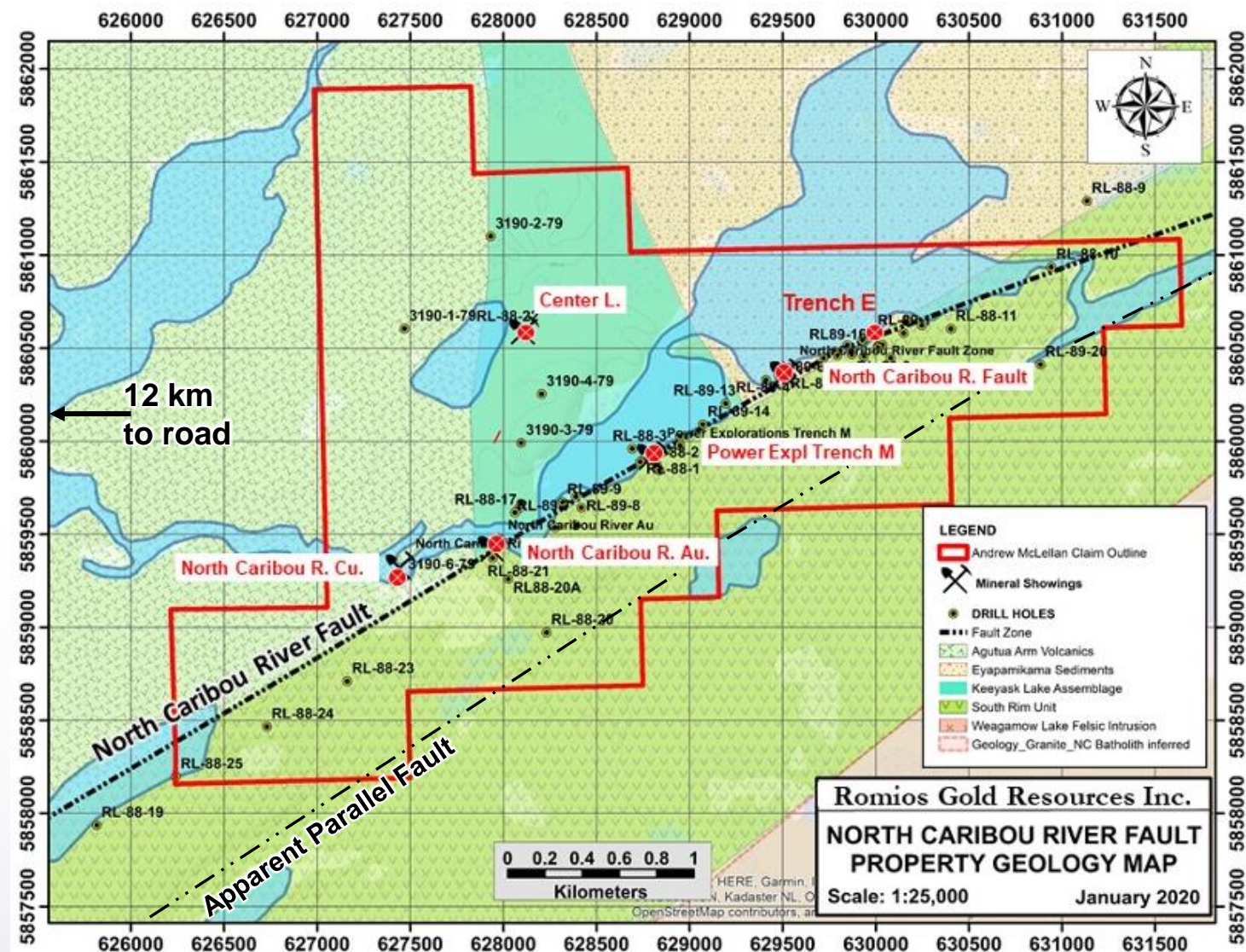
- Romios holds the majority of the gold prospects in this area outside of Newmont's Musselwhite mine.
- Acquired Arseno Lake claims in 2020. First fieldwork in 2022. Confirmed presence of kyanite schist. Indicative of hydrothermal alteration path?
- Acquired North Caribou River claims in 2020. Encouraging results from 2020 VLF survey and soil sampling in 2021-22.
- Very unusual to have an entire greenstone belt with only one mine. Past exploration was sporadic, focused on chasing BIFs and neglecting other targets.



NORTH CARIBOU RIVER PROJECT

28

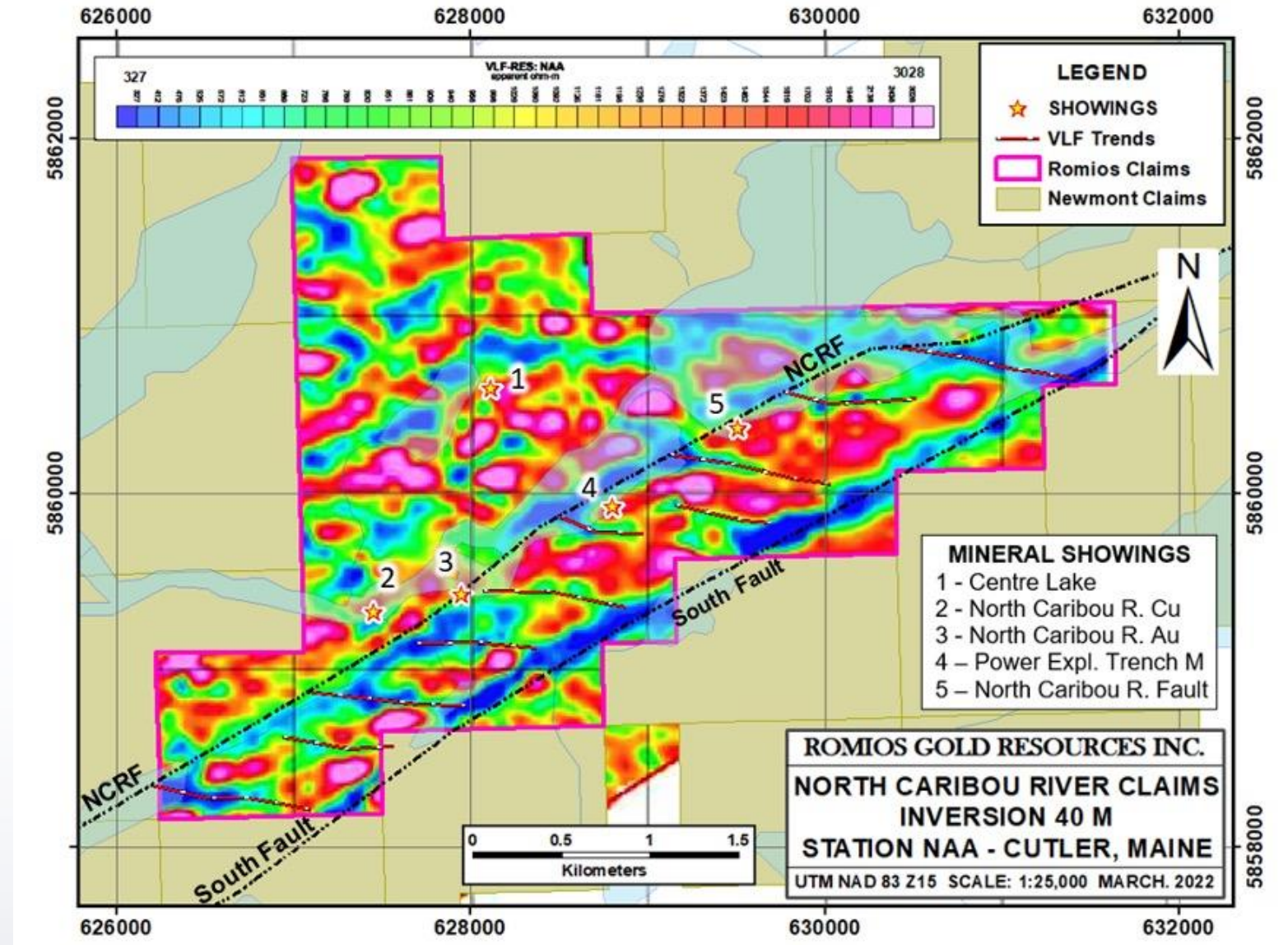
- Acquired in 2020. Covers 6 km of the >15 km long North Caribou River Fault (NCRF).
- NCRF was heavily drilled in the 1980s and hosts numerous small high-grade Au showings, broad zones of sulphidation and alteration, etc.
- Up to 0.12 oz/t Au/15.9 ft, 0.08 oz/t Au /10.6 ft, 9.9 to 55.7 g/t Au from a 23 cm wide, sulphide-rich vein, part of a broad series of *en echelon* veins.
- No attention was paid to the parallel fault 800 m south or the possibility of more favourable, potentially mineralized splay faults linking the main structures.



NORTH CARIBOU RIVER PROJECT

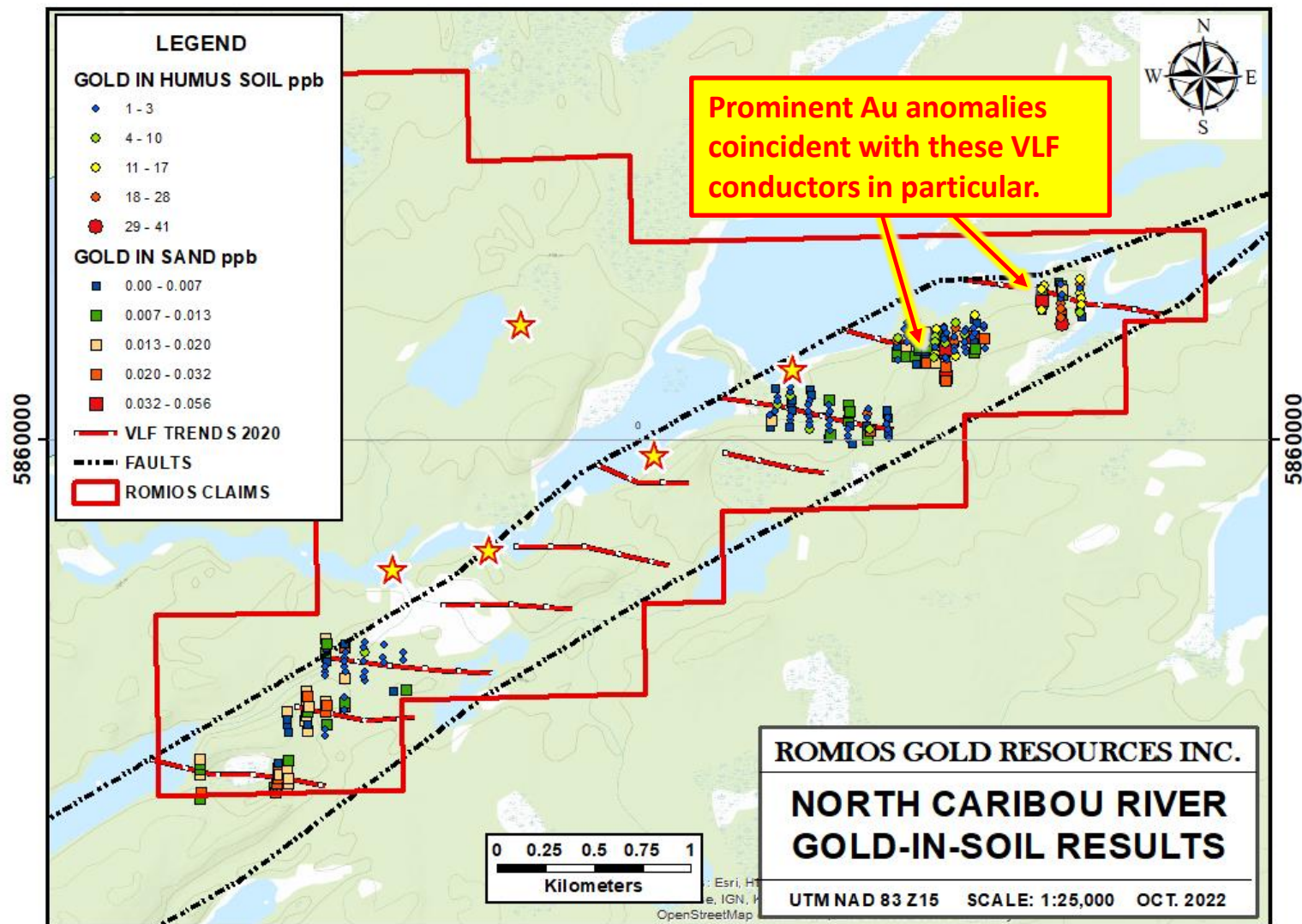
29

- Romios' 2020 airborne VLF-Mag survey has identified 10 VLF trends believed to reflect splay faults off the NCRF.
- Geological mapping of the limited outcrop confirms a pronounced change in the local foliation approaching one such break.
- Followed up by soil sampling in 2021-22 with encouraging results, particularly on the 2 northernmost splays.



NORTH CARIBOU RIVER PROJECT – GOLD IN SOILS RESULTS

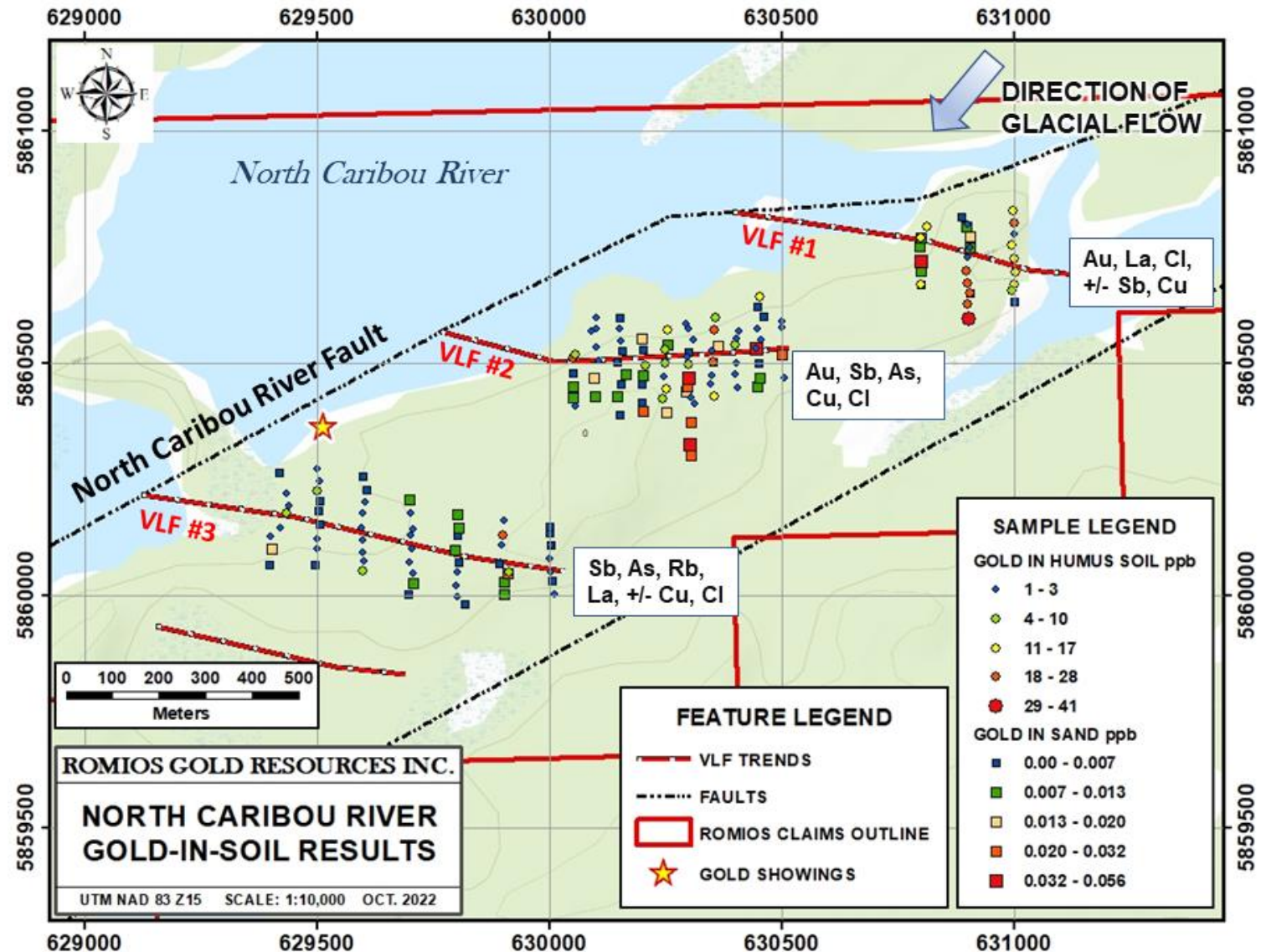
- Soil (humus and/or glacial sand) sampling completed over 6 of the 10 VLF targets in 2021-2022.
- Best gold anomalies coincident with 2 northernmost sampled targets.
- Variable Cu, La, Br and As anomalies associated with portions of other VLF targets.



NORTH CARIBOU RIVER PROJECT – GOLD IN SOILS RESULTS

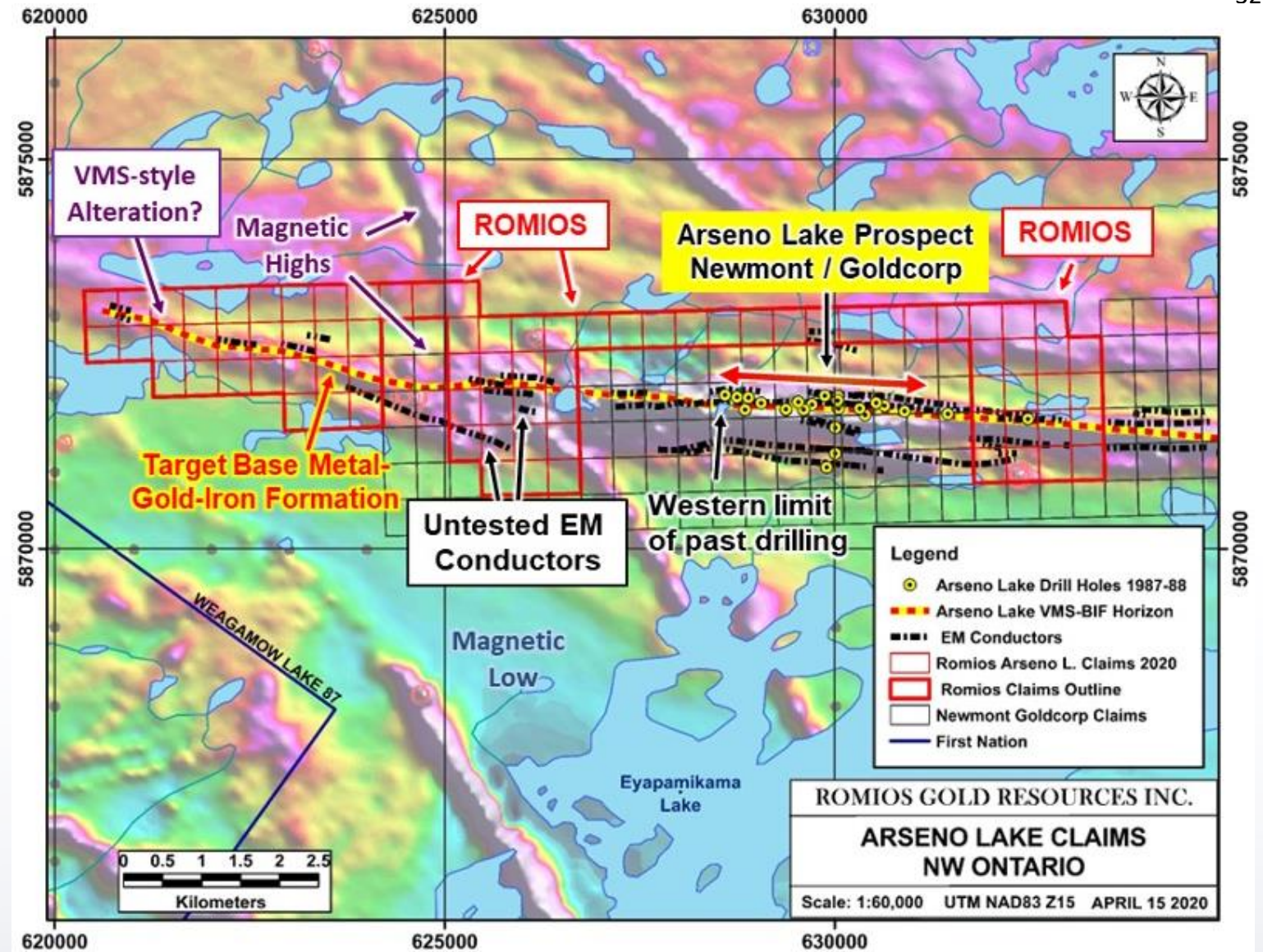
31

- 2022 program extended sampling and mapping of 2 VLF targets with good results. Hampered by logistical issues this year.
- Next work phase will complete soil sampling over all accessible targets, ground VLF surveys to locate the centre of the faults, and possible trenching to define drill targets.



ARSENO LAKE PROJECT

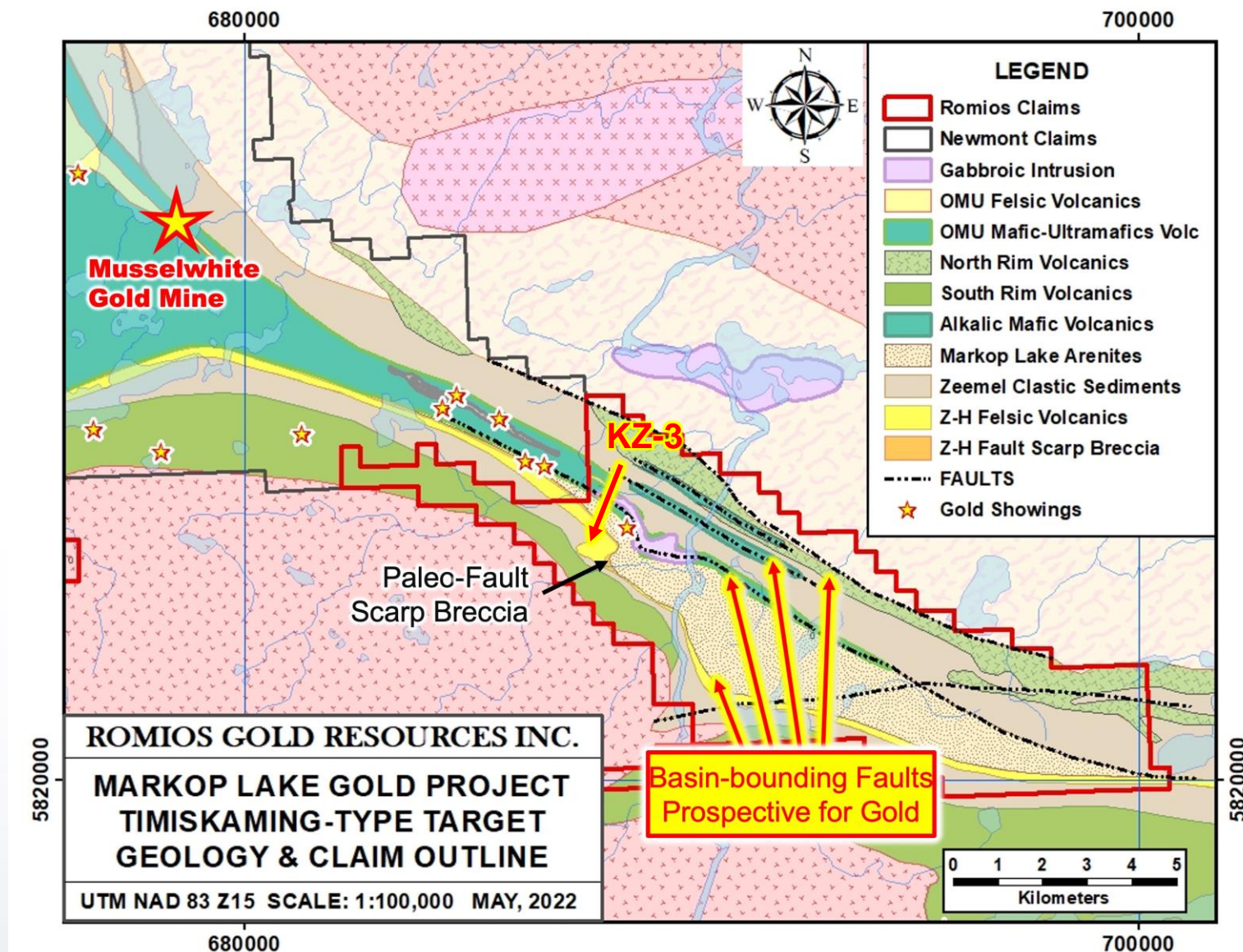
- 4 km from road.
- Unusual BIF-hosted Pb-Zn-Ag +/- Au deposit held by Newmont now; approx. 920,000 T @ 8.7% Zn+Pb, 1.5 oz/t Ag.
- No significant work since the 1980's. No systematic testing of the gold overprint?
- >1 km long cluster of untested EM conductors on Romios claims.
- 2022 work located kyanite, andalusite, biotite schists at western end of claims, possible VMS alteration path.
- Deposit geology appears similar to the giant Bathurst VMS deposit, plus with a 700 m wide overprint of fuchsite, tourmaline +/- Au up to 0.4 oz/t.



MARKOP LAKE PROJECT

33

- Acquired in 2019 & 2022. Brief field work by Romios in 2022 on western claims.
- Little past work as previous explorers focussed on Musselwhite type magnetic highs (BIFs).
- Timiskaming ages discovered by Goldcorp researchers in these basin rocks in 2014, no follow-up work.
- Paleo fault-scarp breccias and clastic sediment textures outline margins of the basins prospective for Timiskaming (Abitibi) type gold deposits.
- This is one of 3 Timiskaming type basins known along the North Caribou Terrane boundary. The other 2 have past producing mines (Stull Lake, Island Lake) and 1 major untapped deposit (Monument Bay)



WHY INVEST IN ROMIOS TODAY?

34

- Plans are underway to re-focus the company's efforts on core assets in Nevada while continuing low-cost, effective exploration in BC and ON.
- New Au and Cu-Au-Ag-Zn-(Co) Discoveries at Lundmark-Akow Lake, Ont.
- Promising Cu-Au Porphyry prospects at TREK and JW near Galore Creek, BC among claims covering over 400 km².
- Currently identifying potential joint-venture partners for non-core assets
- All exploration assets are within major, stable mining camps in US & Canada
- Launching significant marketing campaign in 2022 to re-establish communications with shareholders and institutions
- New Kinkaid Project in Nevada covers dozens of highly prospective Au-Cu-Ag showings neglected for many decades.
- Re-evaluation of historic Scossa gold mine and re-focus on boiling zone levels with potential for high-grade Au.



Romios Gold Resources Inc.
2 Toronto St., Suite 500
Toronto, ON M5C 2B6
Email: sburega@romios.com
www.romios.com
Phone: (647) 515-3734



Romios Gold Resources Inc.
2 Toronto St., Suite 500
Toronto, ON M5C 2B6
Email: sburega@romios.com
www.romios.com
Phone: (647) 515-3734